

# DRIVER INSTALLATION PROCEDURE

## WINDOWS 10 (32 or 64 BIT)

N-Com Wizard 2.0 (and higher)

**PRELIMINARY REMARKS:** In order to install the right drivers, you need to know if the operating system is the 32 bit or 64 bit type. In case you do not know which type of system is being used, proceed as follows:

1. Open the Start menu of Windows 10 and select **"Settings"**;
2. Select **"System"** and subsequently **"About"**: the "System type" field will indicate **32-bit Operating System** or **64-bit Operating System**.

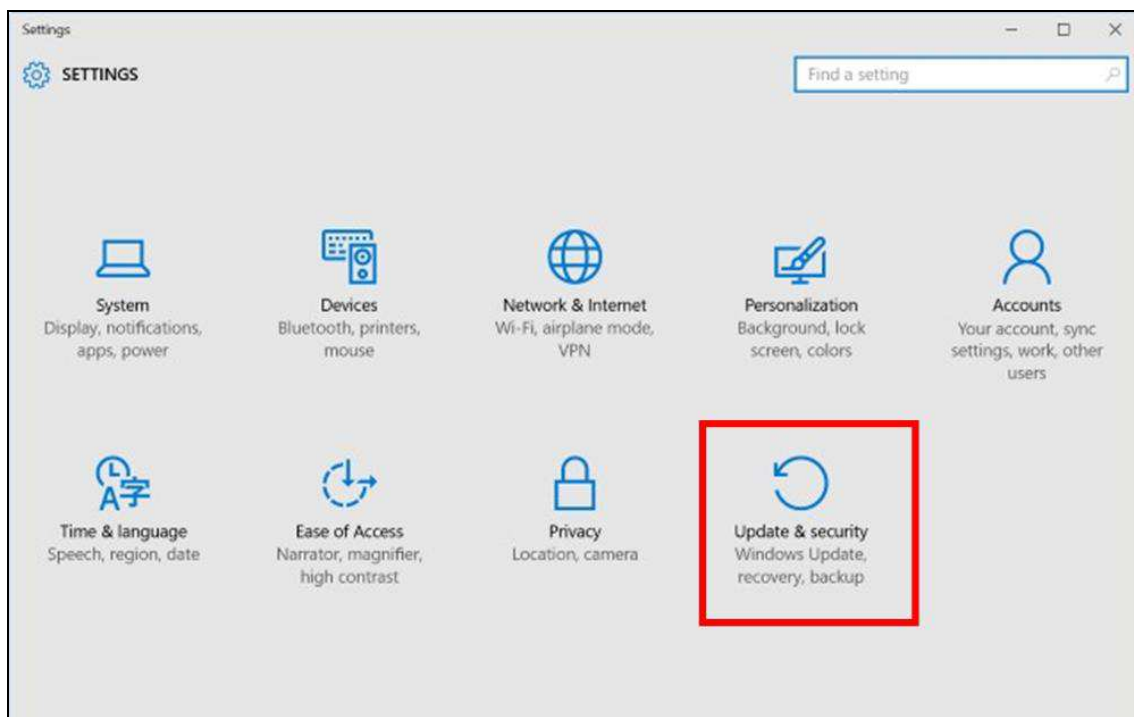
### DRIVER INSTALLATION

To update the firmware, you need to install the communication drivers.

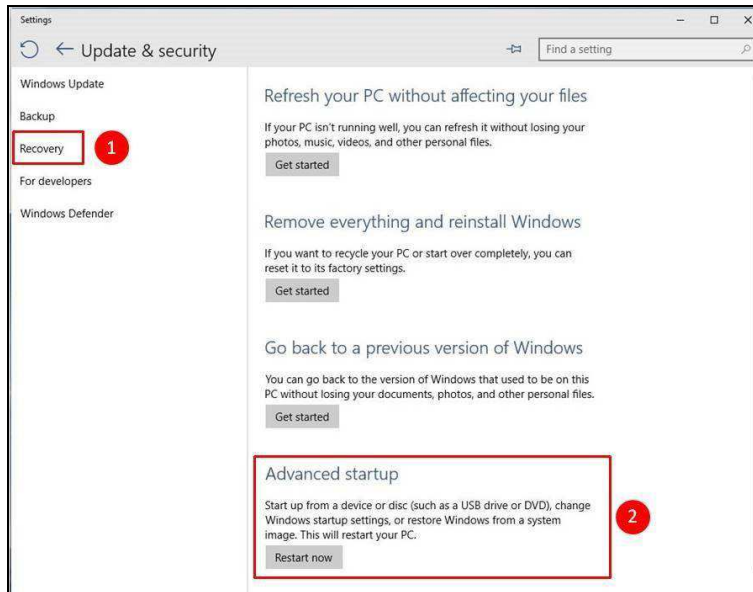
The drivers are found in the same directory where the N-Com Wizard is installed, usually **c:\program files (x86)\Nolan\N-Com wizard\ drivers**

When carrying out the update for the first time, select the drivers by following the procedure described here below:

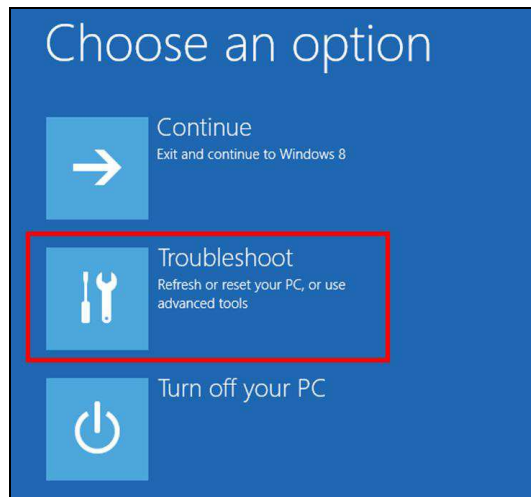
1. First of all, the Windows 10 driver signature control must be disabled.
2. Open the **"Settings"** menu and select **"Updates and security"**.



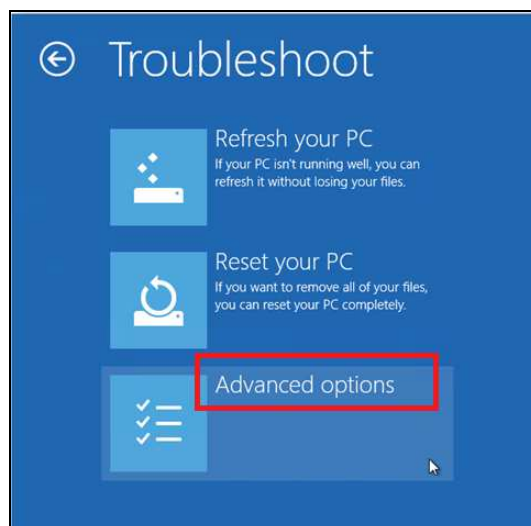
3. Select "Recovery". Inside the menu "Advanced startup options", select "Restart now".



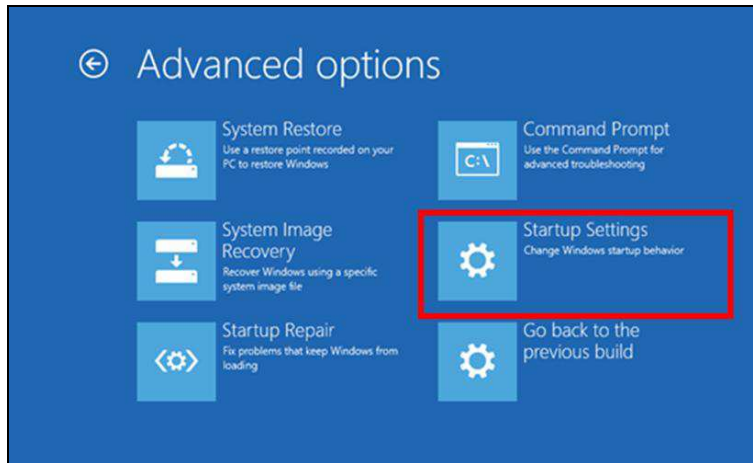
4. Then click on "Troubleshoot";



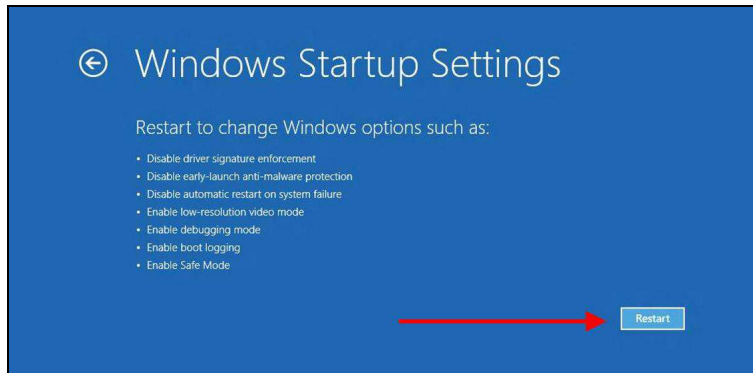
5. In the next screenshot, click on "Advanced Options";



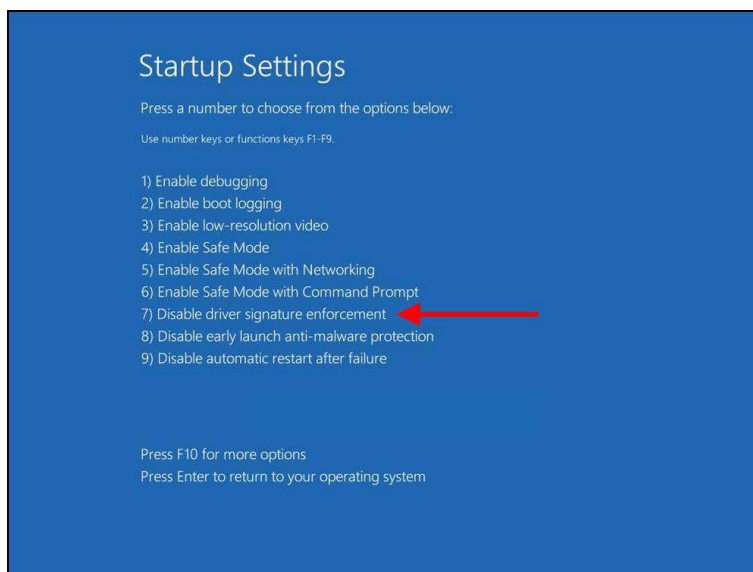
6. Now click on "Windows Startup Settings";



7. Click on "Restart";

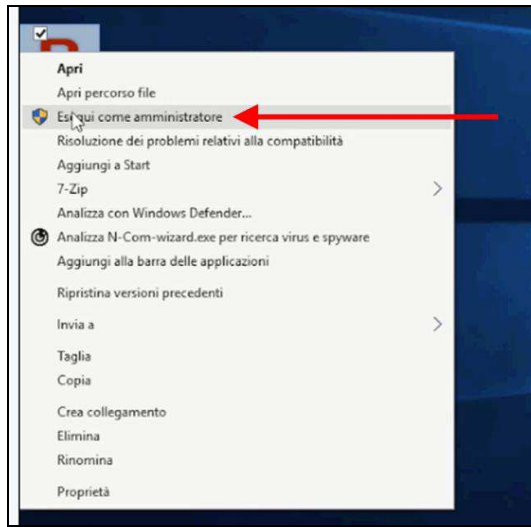


8. Before the PC restarts, you will see the following screenshot; press key number 7 to select "Disable driver signature enforcement".

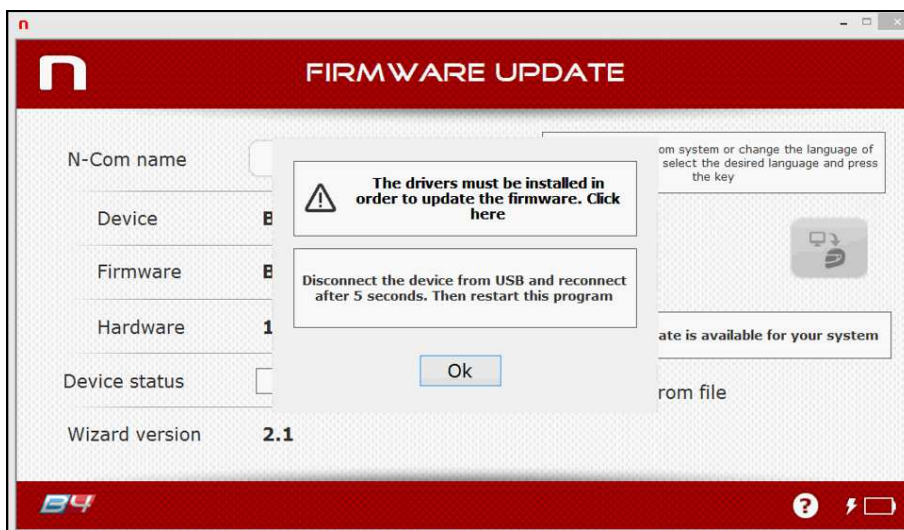


9. Now the system will restart.

10. Connect the N-Com system to the PC (connect the cable to the helmet FIRST and THEN to the PC) and start N-Com Wizard by right-clicking and selecting **"Execute as administrator"** from the menu that appears on the screen.

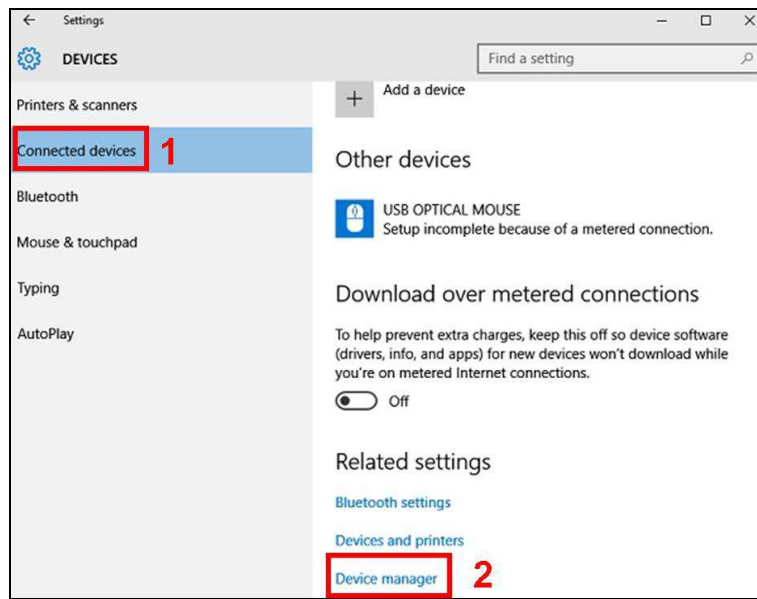


11. On the screen **"Firmware Update"**, select the language by clicking on the relevant flag, then press the pushbutton **"Install Firmware Update"**.
12. **Update from file** (for example, for the installation of specific firmware for the Tom Tom Rider).  
 In case you have the .DFU file available (because downloaded beforehand from the N-Com website), select the option **"Update from File"**, then press the pushbutton **"Install Firmware Update"**.  
 Select the firmware file to be installed (.DFU file), previously saved, and continue.
13. Follow the instructions; when you see the message in the next figure go to the next step of this procedure. The LEDs on the N-Com device installed on the helmet will turn off; this is normal.



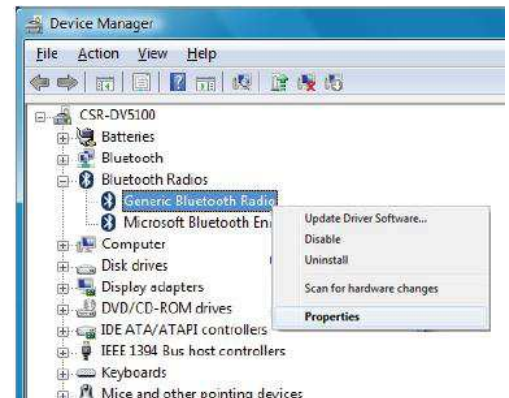
14. Leaving the N-Com Wizard on, now open the **"Settings"** menu once again (click on it if you have the relevant icon on the desktop or search for it on the Start Menu).

15. From "Settings", select "Devices", "Connected devices", "Device manager".

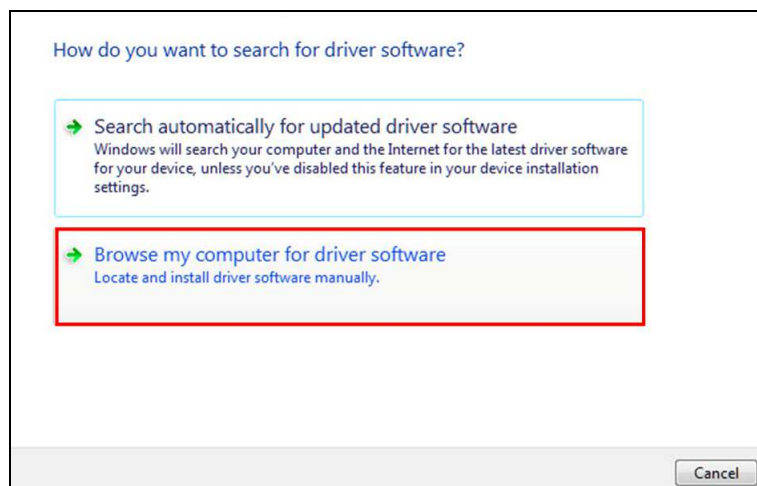


16. Find a device named **Radio Bluetooth** in the device tree and double click on it.

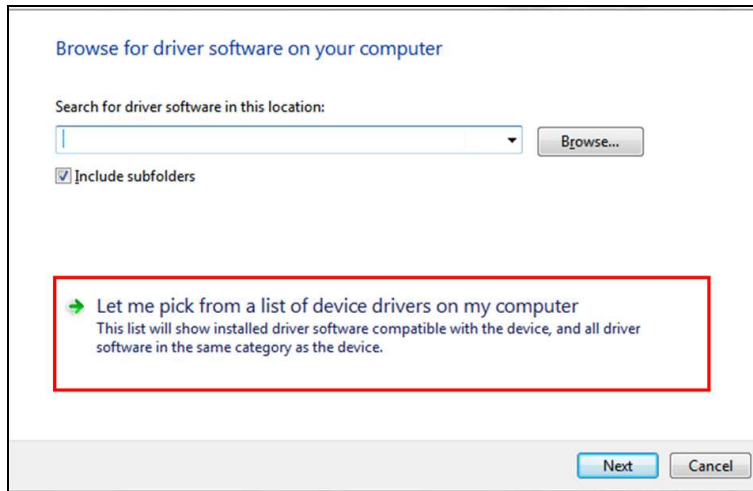
You will see a device named **Generic Bluetooth Radio (or Generic Bluetooth Adapter)**, right-click on it and select **Update Driver Software**, the first menu item.



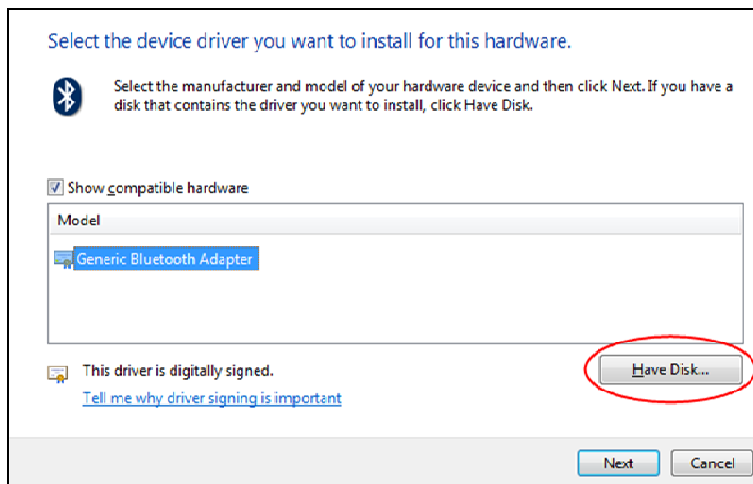
17. The screenshot shown below will appear. Select the control "**Browse my computer for driver software. Locate and install driver software manually**" and click on it.



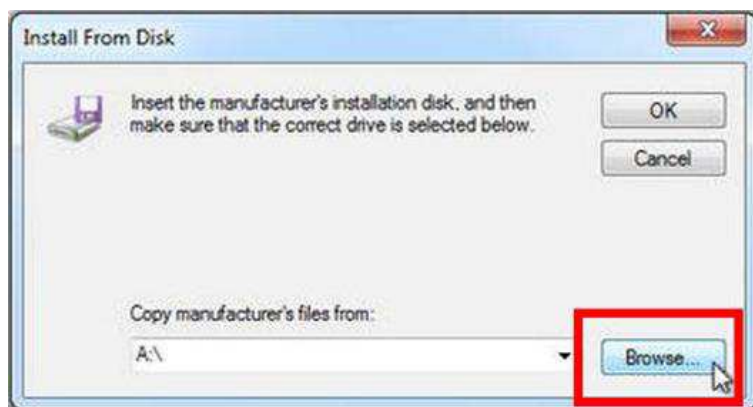
18. In the next screen, click on "Let me pick from a list of device drivers in my computer".



19. In the next screen, click on "Have a disk".



20. Click on "Browse";



- 21. Then select the same directory and folder where the N-Com device drivers were saved (usually: c:\programmi\Nolan\N-Com wizard\drivers), select the Win8 folder and afterwards select the 32-bit or the 64-bit folder.

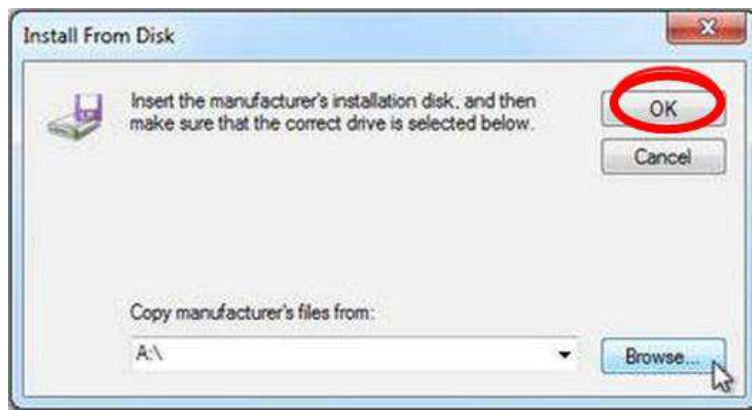
Then, select the file **CSRBlueCoreUSB.inf** in the selected folder, and click on **"Open"**.

Depending on your choice, the directory will be:

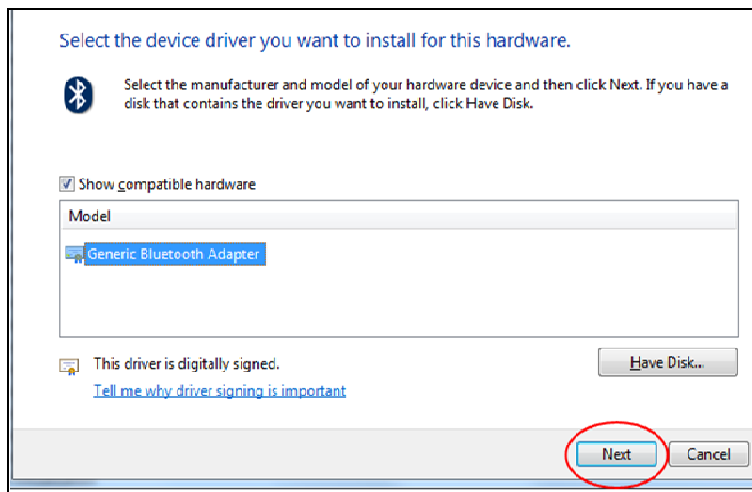
c:\ program files (x86)\Nolan\N-Com wizard\drivers\Win8\32bit

c:\ program files (x86)\Nolan\N-Com wizard\drivers\win8\64bit

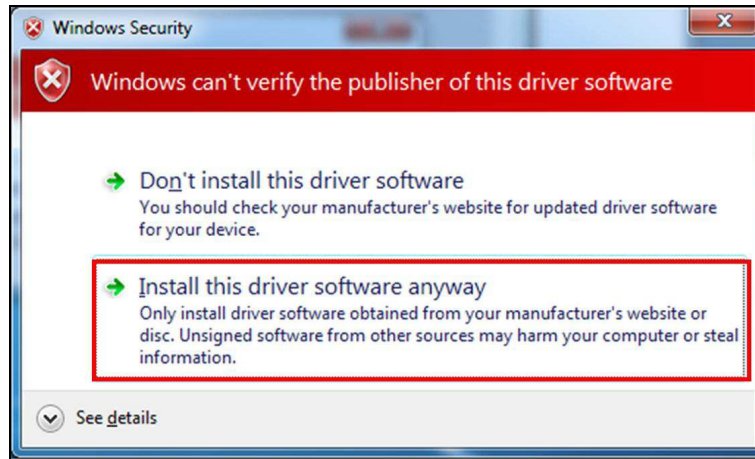
- 22. Click on **"OK"**;



- 23. You will see the same screenshot as in item 19, now click on the Next button and the firmware update procedure will start.



24. On the next screenshot click on “Install this driver software anyway”;



25. After a few seconds, the procedure will end, and the following screenshot will appear.



26. The N-Com Wizard will re-start automatically at the end of the installation of the USB drivers. You will then be able to proceed with updating the firmware as described in steps 10 and 11 of the procedure.

Once you press the pushbutton “Install Firmware Update”, the programme will properly start the N-Com system update procedure.

27. Should this fail to happen, close the N-Com Wizard programme, disconnect the helmet from the PC and reconnect it. Try to carry out the update procedure once again from the start, without installing the drivers; your N-Com device will be recognized by your system.



# DRIVER INSTALLATION PROCEDURE

## WINDOWS 8 (32 or 64 BIT)

N-Com Wizard 2.0 (and higher)

### IDENTIFYING THE OPERATING SYSTEM INSTALLED ON YOUR PC

1. Look for the "Control Panel" icon (on the Start menu or on the desktop, depending on the running configuration of Win8). Position the mouse at the bottom of the screen and left-click to view all the Apps installed on your PC.
2. Launch the "Control Panel" App.
3. From the "Control Panel", select and click on "System".
4. In the *System* area, find out what your **System type is**: it will state either a **32-bit Operating System** or a **64-bit Operating System**.

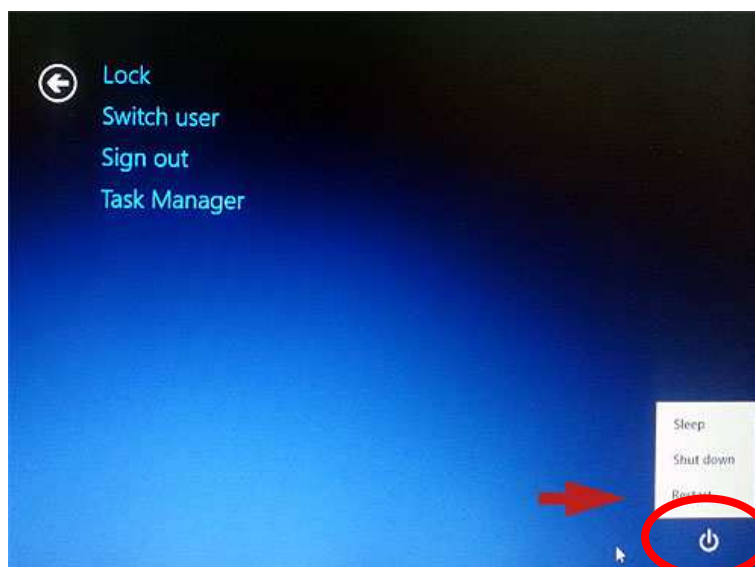
### DRIVER INSTALLATION


To update the firmware, you need to install the communication drivers.

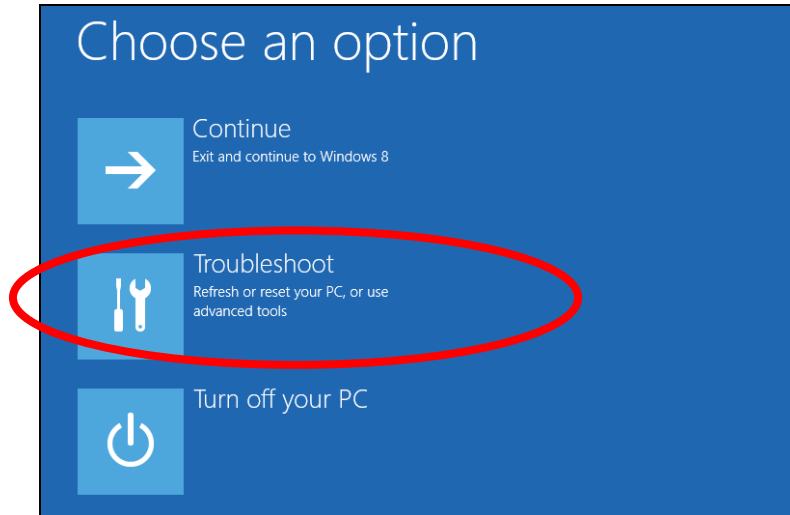
The drivers are found in the same directory where the N-Com Wizard is installed, usually **c:\program files (x86)\Nolan\N-Com wizard\ drivers**

When carrying out the update for the first, select the drivers by following the procedure described here below:

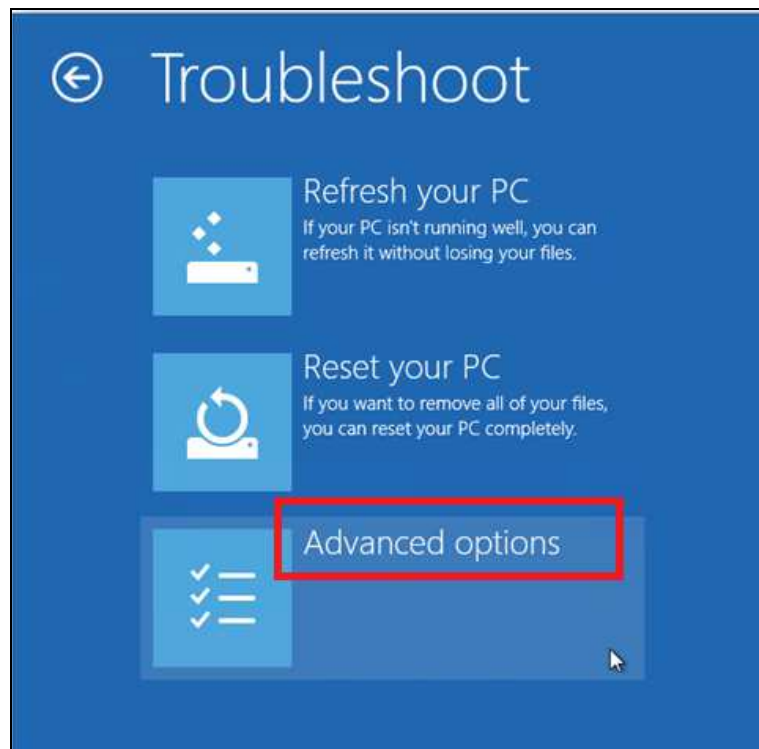
1. First of all, the Windows 8 driver signature control must be disabled.
2. Press the keys CTRL + ALT + CANCEL. The following screenshot will appear:



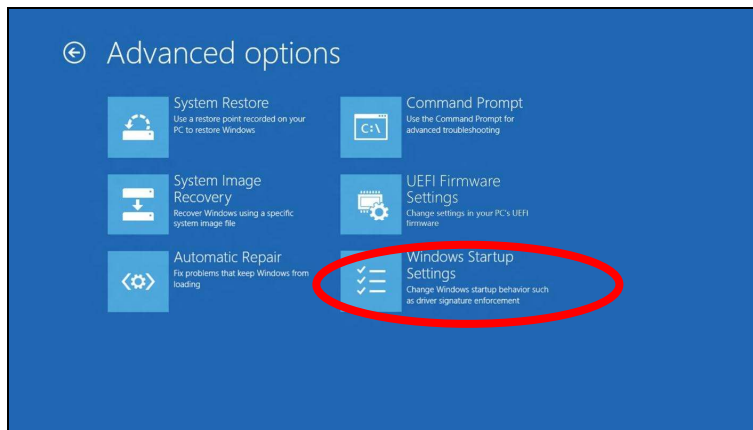
3. Click on the shutdown button  at the bottom right corner;
4. Then, keeping the SHIFT key pressed, click on "Restart".
5. Then click on "Troubleshoot";



6. In the next screenshot, click on "Advanced Options";



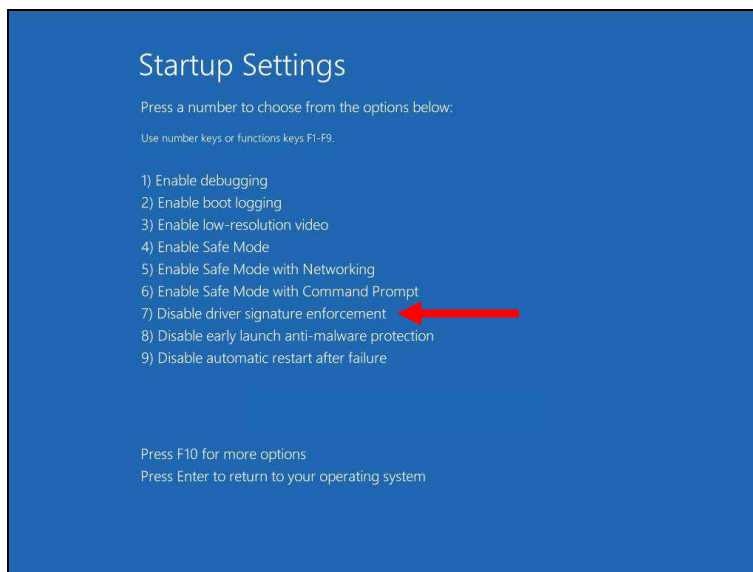
7. Now click on **“Windows Startup Settings”**;



8. Click on **“Restart”** ;

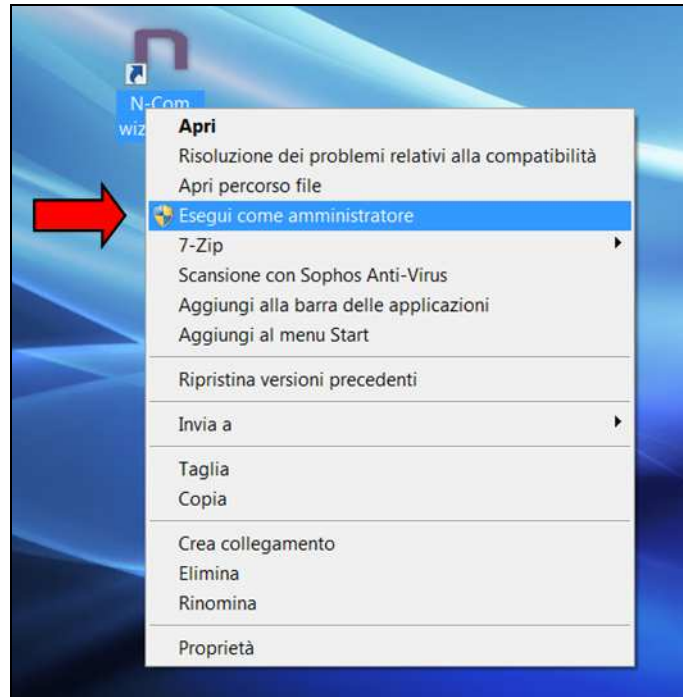


9. Before the PC restarts, you will see the following screenshot; press key number 7 to select **“Disable driver signature enforcement”**.

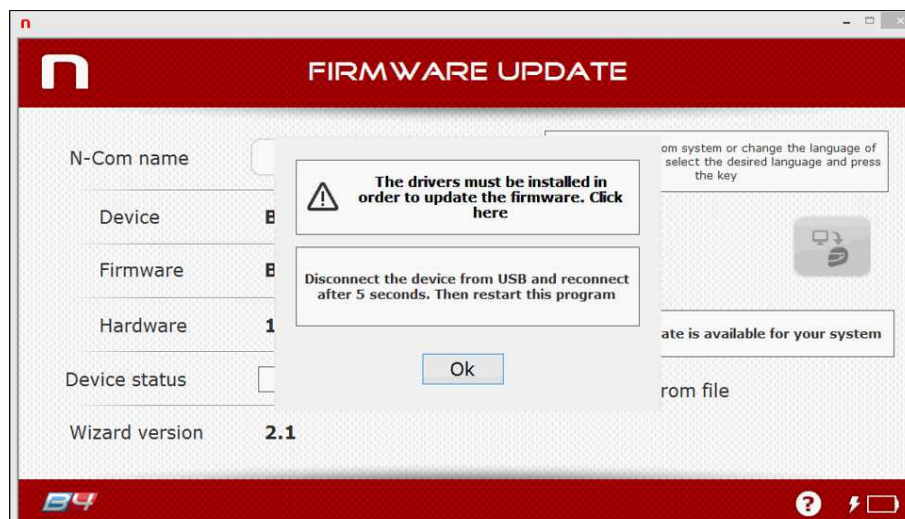


10. Now the system will restart.

11. Connect the N-Com system to the PC (connect the cable to the helmet FIRST and THEN to the PC) and start N-Com Wizard by right-clicking and selecting "**Execute as administrator**" from the menu that appears on the screen.

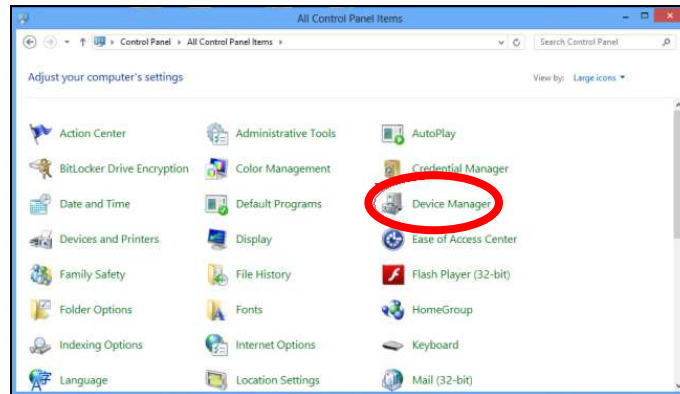


12. On the screen "**Firmware Update**", select the language by clicking on the relevant flag, then press the pushbutton "**Install Firmware Update**".
13. **Update from file** (for example, for the installation of specific firmware for the Tom Tom Rider).  
In case you have the .DFU file available (because downloaded beforehand from the N-Com website), select the option "**Update from File**", then press the pushbutton "**Install Firmware Update**".  
Select the firmware file to be installed (.DFU file), previously saved, and continue.
14. Follow the instructions; when you see the message in the next figure go to the next step of this procedure. The LEDs on the N-Com device installed on the helmet will turn off; this is normal.



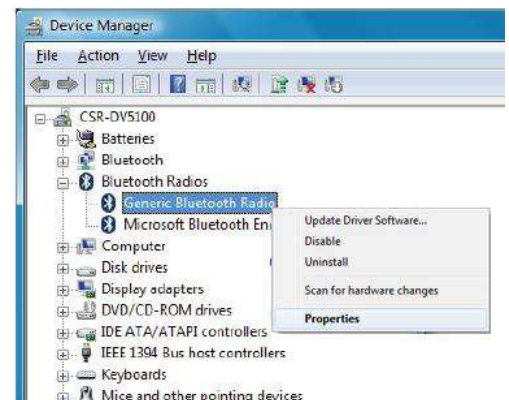
15. Leaving the N-Com Wizard on, now open the “**Control Panel**” once again (click on it if you have the relevant icon on the desktop or search for it on the Start Menu).

16. Select the “**Device Manager**” from the “**Control Panel**”.

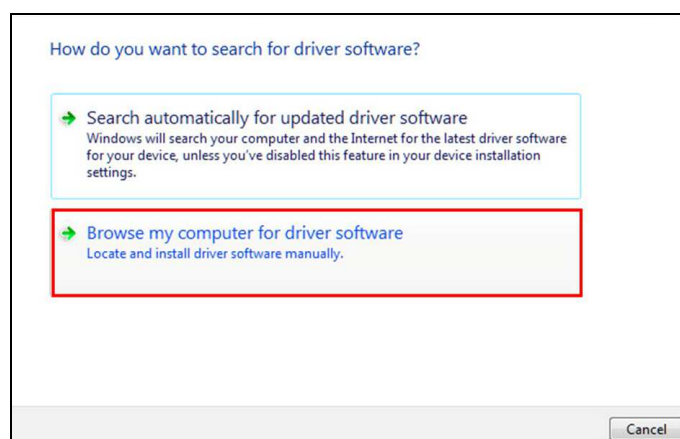


17. Find a device named **Radio Bluetooth** in the device tree and double click on it.

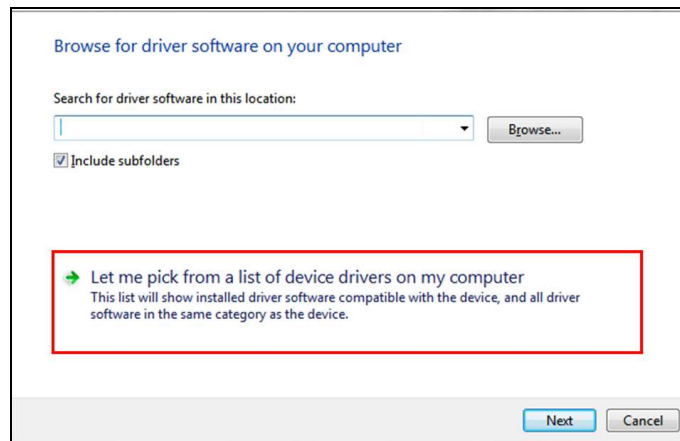
You will see a device named **Generic Bluetooth Radio (or Generic Bluetooth Adapter)**, right-click on it and select **Update Driver Software**, the first menu item.



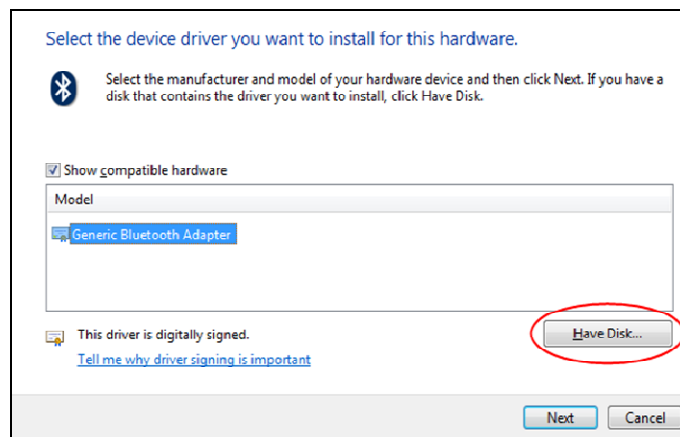
18. The screenshot shown below will appear. Select the control “**Browse my computer for driver software. Locate and install driver software manually**” and click on it.



19. In the next screen, click on "Let me pick from a list of device drivers in my computer".



20. In the next screen, click on "Have a disk".



21. Click on "Browse";



22. Then select the same directory and folder where the N-Com device drivers were saved (usually: c:\programmi\Nolan\N-Com wizard\drivers), select the Win8 folder and afterwards select the 32-bit or the 64-bit folder.

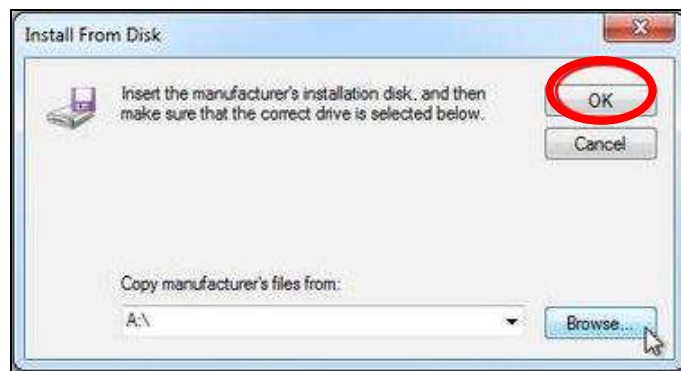
Then, select the file **CSRBlueCoreUSB.inf** in the selected folder, and click on **"Open"**.

Depending on your choice, the directory will be:

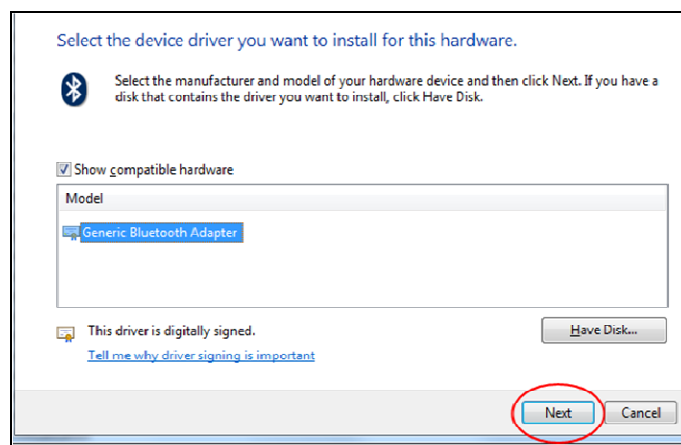
c:\ program files (x86)\Nolan\N-Com wizard\drivers\Win8\32bit

c:\ program files (x86)\Nolan\N-Com wizard\drivers\win8\64bit

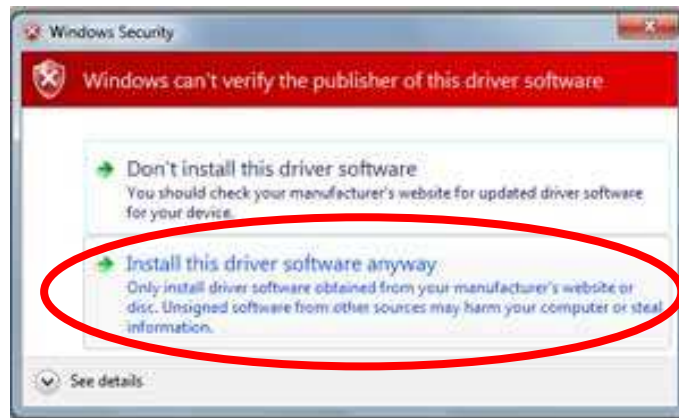
23. Click on **"OK"**;



24. You will see the same screenshot as in item 20, now click on the Next button and the firmware update procedure will start.



25. On the next screenshot click on **"Install this driver software anyway"**;



26. After a few seconds, the procedure will end, and the following screenshot will appear.



27. The N-Com Wizard will re-start automatically at the end of the installation of the USB drivers. You will then be able to proceed with updating the firmware as described in steps 3 and 4 of the procedure.

Once you press the pushbutton **"Install Firmware Update"**, the programme will properly start the N-Com system update procedure.

28. Should this fail to happen, close the N-Com Wizard programme, disconnect the helmet from the PC and reconnect it. Try to carry out the update procedure once again from the start, without installing the drivers; your N-Com device will be recognized by your system.

**This procedure must be carried out only at the FIRST firmware update.**



# DRIVER INSTALLATION PROCEDURE

## WINDOWS 7 (32 or 64 BIT)

N-Com Wizard 2.0 (and higher)

### DETERMINING THE OPERATING SYSTEM RUNNING ON YOUR PC

1. Click on **Start** and then on **Control Panel**
2. Click on **System (and Security)**.
3. In the **System and Security** window, click on the **System** link.
4. When the **System** window opens, named *View basic information about your computer*, locate the **System** area below the large Windows logo.
5. In the **System** area, find out your **System type**: it will state either a **32-bit Operating System** or a **64-bit Operating System**.

Important: There is no 64-bit version in the Windows 7 Starter Edition.

### DRIVER INSTALLATION

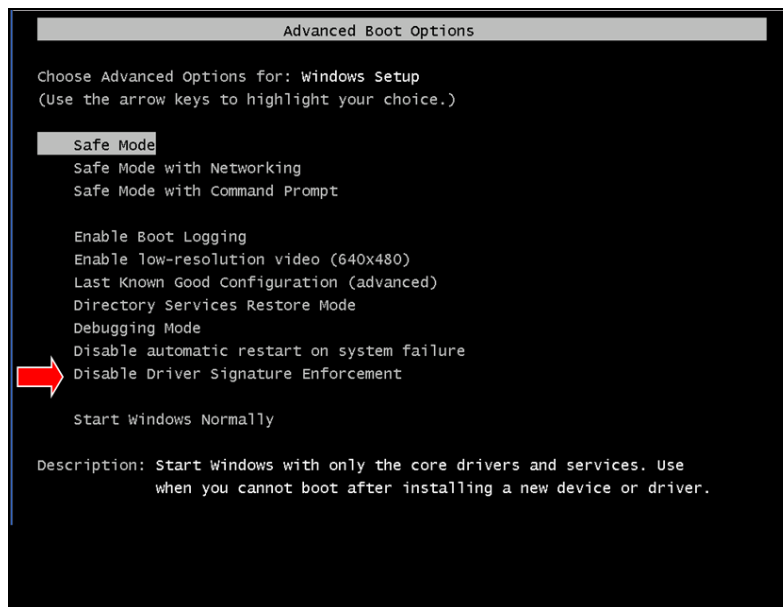
To update the firmware, you need to install the communication drivers.

The drivers can be found under the same directory where the N-Com Wizard is installed, usually **c:\programmi\Nolan\N-Com wizard\ drivers**

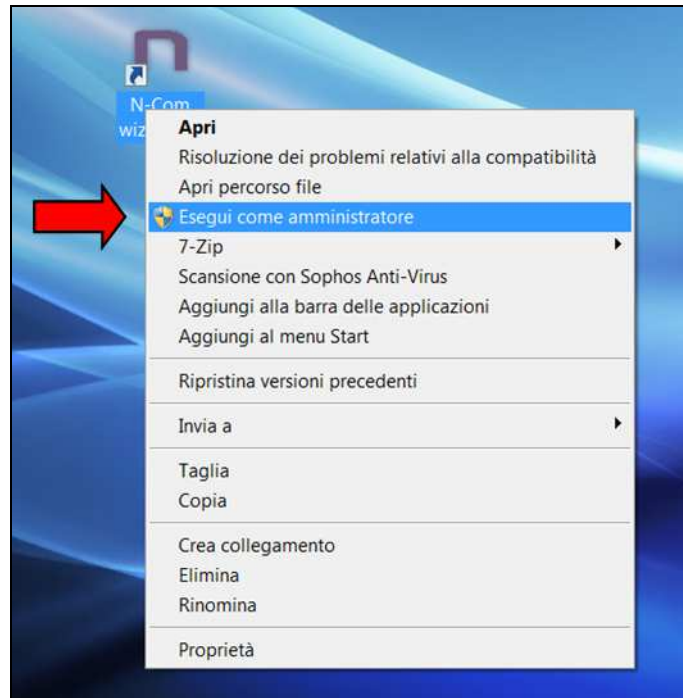
When carrying out the update for the first time, select the drivers by following the procedure here below:

1. Re-start your computer. When the computer reboots, after the first start-up screen but **before** the windows start-up screen, press the F8 key.
2. The **advanced boot option** menu will be displayed and your screen will look like the screenshot shown below. With the cursor key select the item **Disable Driver Signature Enforcement** and then press the enter key.

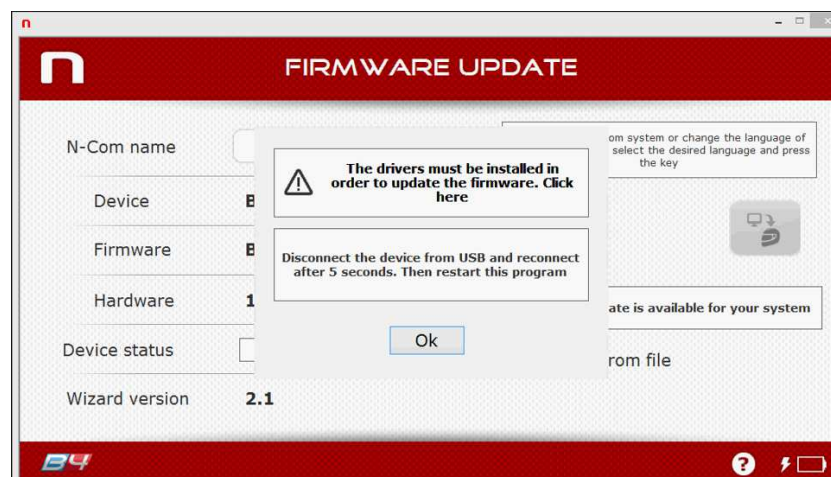
Windows will start normally.



3. Connect the N-Com system to the PC (connect the cable to the helmet FIRST and THEN to the PC) and start N-Com Wizard by right-clicking and selecting **"Execute as administrator"** from the menu that appears on the screen.



4. On the screen **"Firmware Update"**, select the language by clicking on the relevant flag, then press the pushbutton **"Install Firmware Update"**.
5. **Update from file** (for example, for the installation of specific firmware for the Tom Tom Rider).  
In case you have the .DFU file available (because downloaded beforehand from the N-Com website), select the option **"Update from File"**, then press the pushbutton **"Install Firmware Update"**.  
Select the firmware file to be installed (.DFU file) previously saved and continue.
6. Follow the instructions; when you see the message in the next figure go to step 7 of this procedure. The LEDs on the N-Com device on the helmet, will turn off; this is normal.



7. Open the device manager applet on your PC as follows:

- a) Click on **Start** and access the **Control Panel** of the PC.
- b) Click on the **System and Security** link.

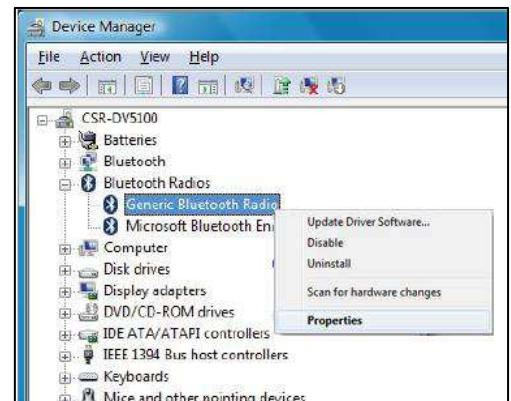
**Note:** If you are using the *Large icons* or *Small icons* view for the Control Panel, you will not see this link. Simply click on **Device Manager** and then proceed to step "d").

- c) In the *System and Security* window, click on the **Device Manager** link located under the *System* heading.
- d) You can now use **Device Manager** to update the drivers of the Bluetooth device.

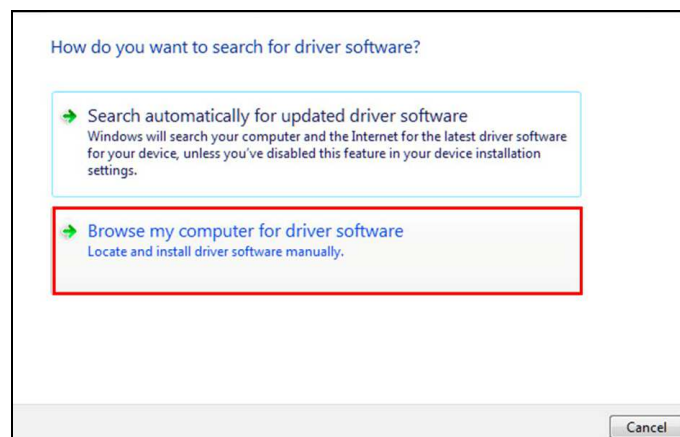


8. Find a device named **Radio Bluetooth** in the device tree and double click on it.

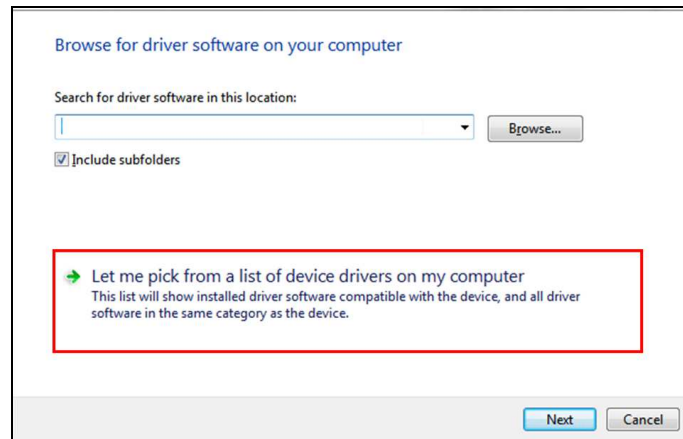
You will see a device named **Generic Bluetooth Radio**, right-click on it and select **Update Driver Software**, the first menu item.



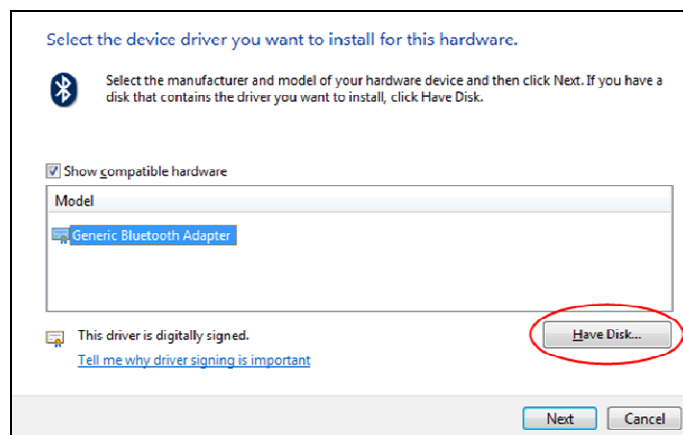
9. You will see a screenshot like the following. Select the second option "**Browse my computer for driver software. Locate and install driver software manually**" and click on it.



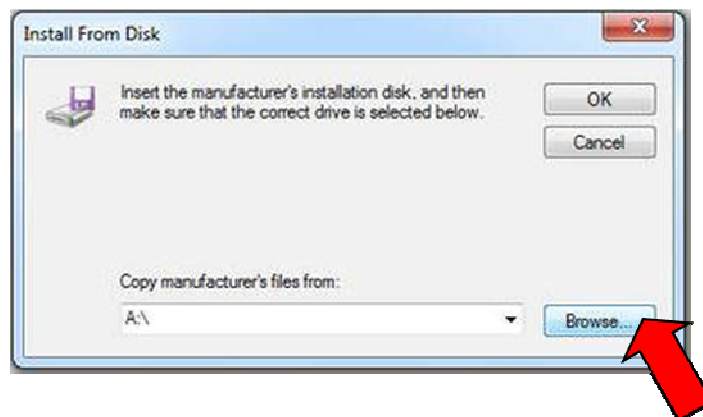
10. In the next screen click on **"Let me pick from a list of device drivers in my computer"**.



11. In the next screen click on **"Have a disk"**.



12. Click on **"Browse"**;



13. Select the directory and the folder where the drivers of the N-Com device have been saved (usually `c:\programmi\Nolan\N-Com wizard\drivers`), select the Win7 folder and afterwards select the 32 bit or the 64 bit folder.

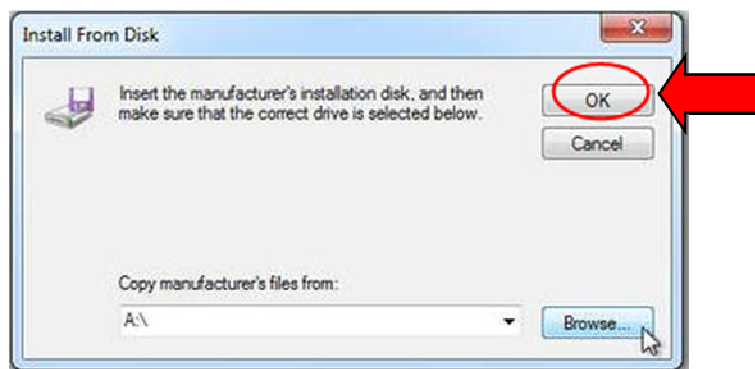
Then select the file **CSRBlueCoreUSB.inf** in the selected folder, and click on **"Open"**.

Depending on your choice, the directory will be:

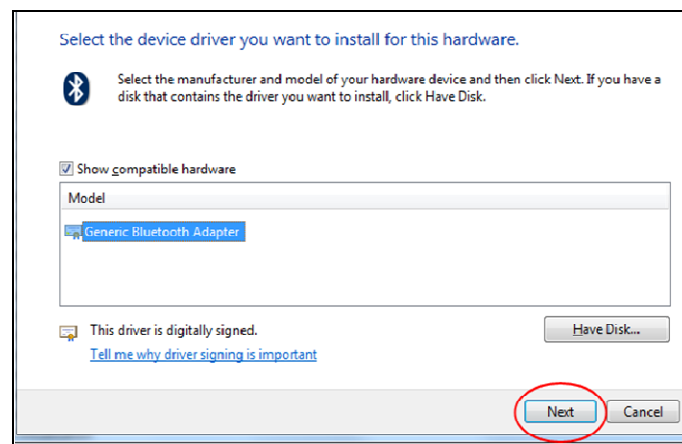
`c:\programmi\Nolan\N-Com wizard\drivers\Win7\32bit`

`c:\programmi\Nolan\N-Com wizard\drivers\win7\64bit`

14. Now press **"OK"** on the next screenshot;



15. You will see the same screenshot as in item 11, now click on the **Next** button and the firmware update procedure will start.



16. You will see a screen with a progress bar; after a few seconds, the procedure will terminate and you will see a screenshot like the following. Click on **Close** to terminate the procedure.



17. The N-Com Wizard will re-start automatically at the end of the installation of the USB drivers. You will then be able to proceed with updating the firmware as described in steps 3 and 4 of the procedure.
- Once you press the pushbutton "**Install Firmware Update**", the programme will properly start the N-Com system update procedure.
18. Should this fail to happen, close the N-Com Wizard programme, disconnect the helmet from the PC and reconnect it. Try to carry out the update procedure once again from the start, without installing the drivers; your N-Com device will be recognized by your system.

**This procedure must be carried out only at the FIRST firmware update.**